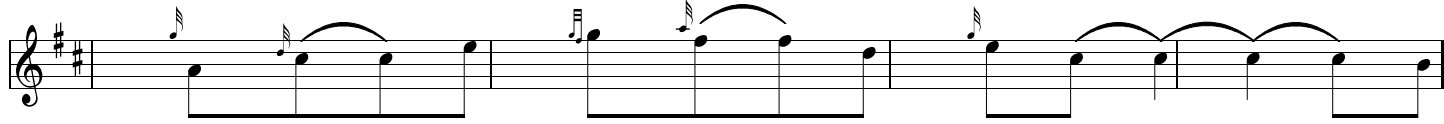
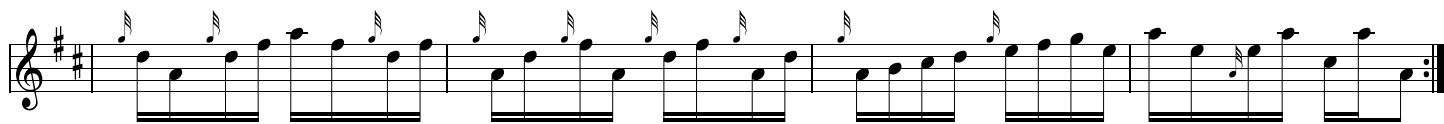
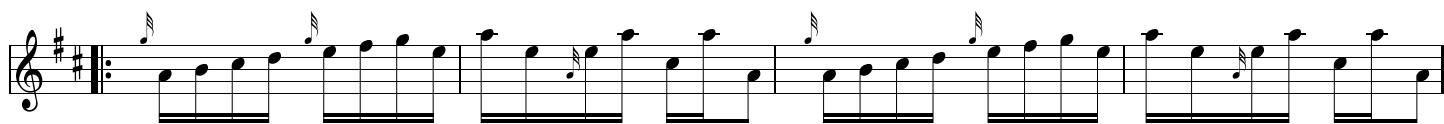
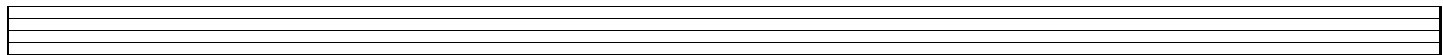
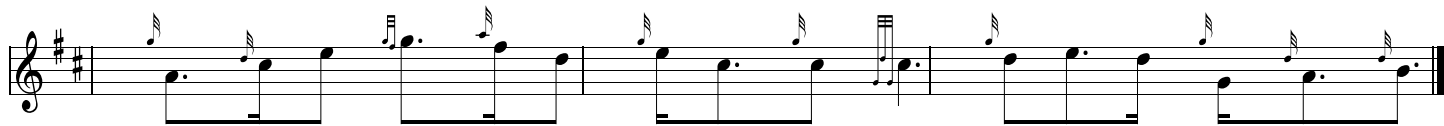


Steam Train to Mallaig - MELODY (Piper 1 then Piper 2) Mary-Ann MacKinnon



The image displays a musical score for a single melodic line, presented across seven staves. The key signature is G major, indicated by two sharps (F# and C#). The notation includes a variety of rhythmic values, primarily quarter and eighth notes, often grouped with slurs. Accents are placed above several notes to emphasize their rhythmic placement. The music flows from left to right across the staves, with some staves ending in double bar lines. The overall style is that of a traditional or folk melody.